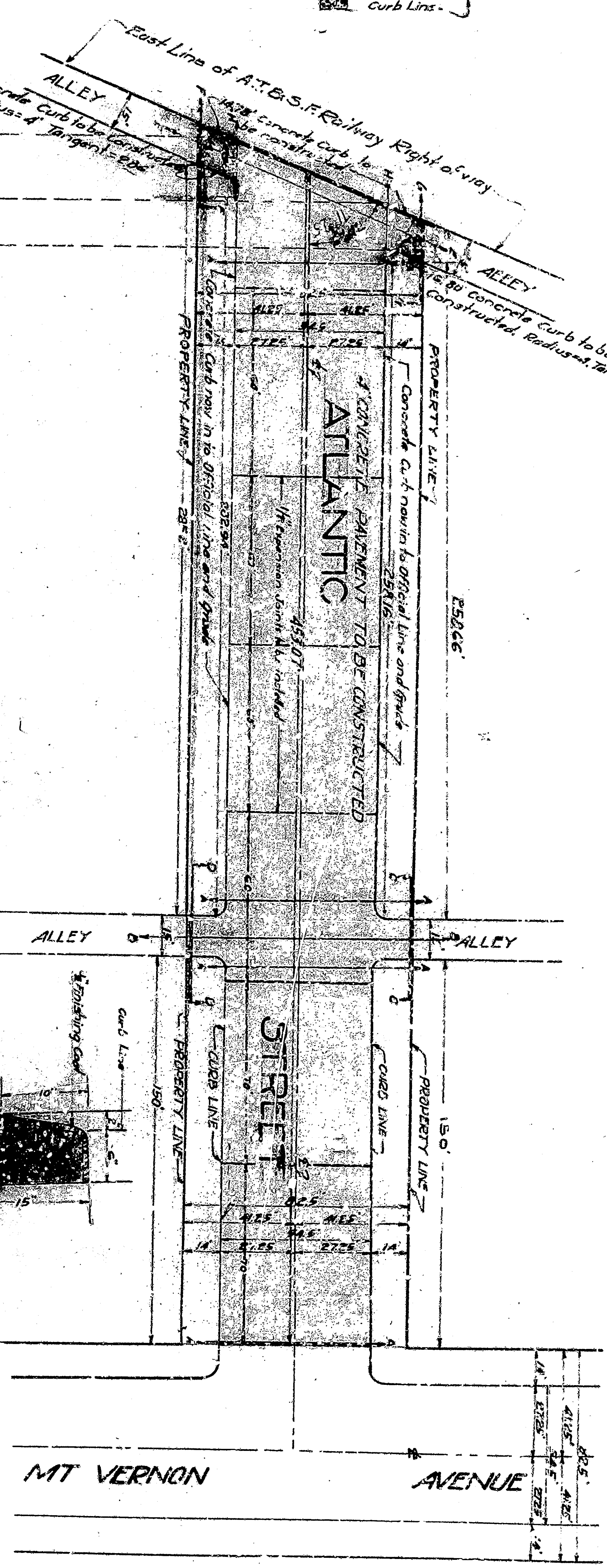
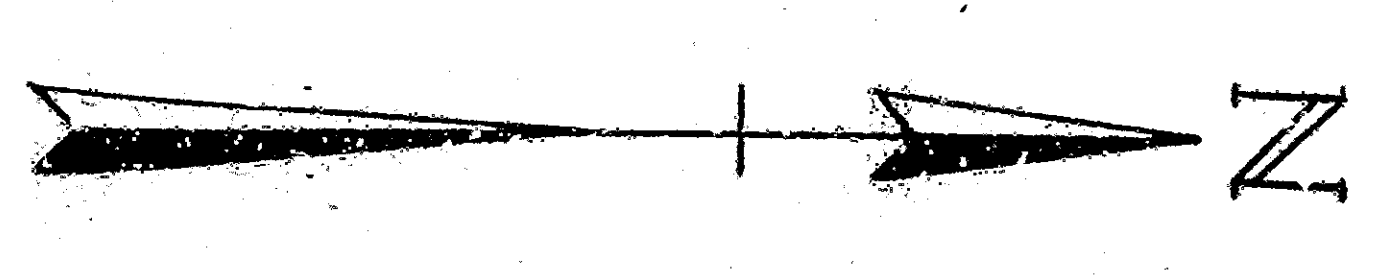


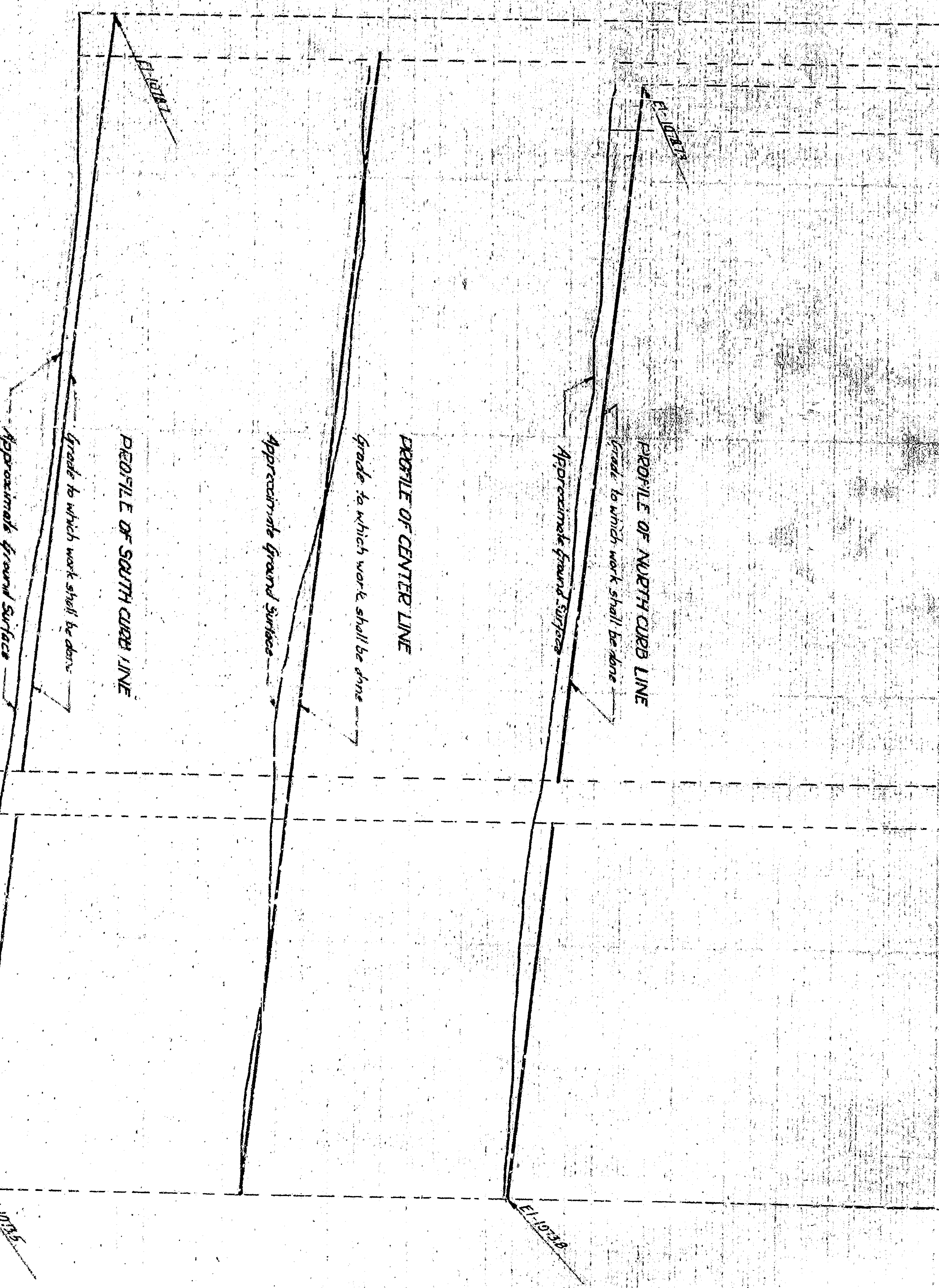
PLAN NO 863-4
FOR THE IMPROVEMENT OF
ATLANTIC STREET
BETWEEN
THE WEST LINE OF MT VERNON AVENUE
AND THE
EAST LINE OF THE A. T. & S. F. R.R. RIGHT-OF-WAY

CITY OF SAN BERNARDINO, CALIFORNIA
March 1927
C. E. Johnson
City Engineer



PLAN
Scale 1"=40'

SECTION OF CURB
Scale 1"=4'



PROFILE
Scale: Horizontal 1"=40'
Vertical 1"=4'

Blue Line shows Approximate ground surface
Red Line shows grade to which work shall be done

LEGEND
"or" in roman type indicates
to be removed
"or" in roman type or bold
type indicates to be
retained
AT & S. F. R. R. means Atlantic Pacific and Santa Fe
Company
"or" in roman type indicates to be removed
"or" in roman type or bold
type indicates to be retained
Expansion shall be indicated as follows

TITLE TO STREET
This is the title to the street as shown on a plan of the
SAN BERNARDINO COUNTY RECORDS OF SAN BERNARDINO COUNTY, CALIF.
Page 27 of Map Records of San Bernardino County, Cal.
No. 487

GRADE ORDINANCE
Grade of ATLANTIC STREET established 7/17/1914 & shown
No. 487
Note: All elevations shown on this plan are in feet and are to a
datum which is 848.23 feet below the city bench
mark as established by Ordinance No. 383 of the
City of San Bernardino, California.
PLAN ADOPTED - March 21, 1927.

